
THE RIGHT CHOICE FOR AGRICULTURE AND FORESTRY APPLICATIONS



SUPPORTING THE FORESTRY AND AGRICULTURE INDUSTRY

Whether your business is in the timber or agriculture industry, consistency on the job is about planning, control and experience. This also applies to Mantrac.

We provide a wide range of equipment, work tools and solutions to support your business.



FORESTRY ROADS

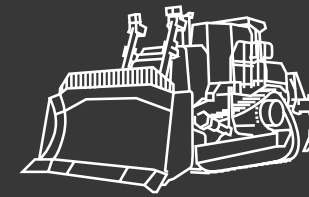
Strength, Versatility, Durability

Machine tracks in poor conditions can increase your hauling costs and expenses, especially with machine breakdowns in remote areas.

Mantrac equipment provides

- Reliable ripping and dozing capacity under the toughest soil conditions.
- Consistency and precision during rough grading with track-type tractors.
- Long economic life with new and used options for cost-efficiency.

Recommended Mantrac machines



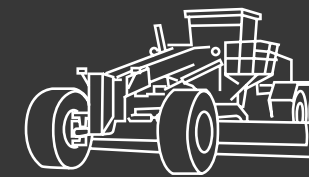
Track-Type Tractors FR

- Cat
- SEM



Track Excavators

- Cat HP
- Cat GC



Motor Graders

- Cat HP
- Cat GC
- SEM



Forestry Products

- Weiler

SAW MILLS AND PAPER MILLS

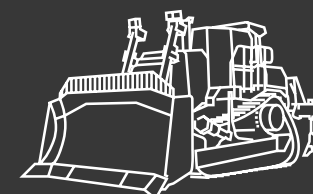
Consistency, Versatility, Cost-effectiveness

Intermittent demand complicates profitability. Specialised units require large CAPEX, with uncertain payback and irregular dealer support.

Mantrac offers a solution

- Low total cost of ownership with lifecycle value and utility solutions.
- Cat power transmission and hydraulic force for peak demands.
- Versatile machines that can be retrofitted with special attachments and work tools for multi-tasking.

Recommended Mantrac machines



Track-Type Tractors FR

- Cat
- SEM



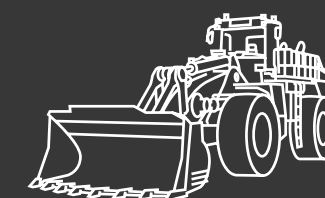
Track Excavators

- Cat HP
- Cat GC



Multiterrain Loaders

- Cat



Wheel Loaders

- Cat HP
- Cat GC
- SEM



Forestry Products

- Weiler

PLANTATIONS AND DAIRY FARMS

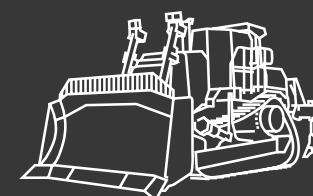
Reliability, Durability, Efficiency

Profitability in agriculture requires efficient resources and businesses cannot afford investing in the wrong equipment.

Mantrac offers the ideal solutions

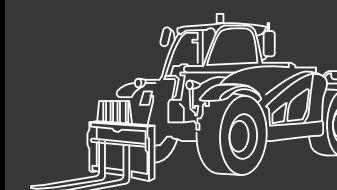
- Cat equipment for long economic life and low total cost of ownership. Or, SEM equipment for utility solutions.
- Reliable performance and uptime.
- Equipment that is easy-to-use and easy-to-maintain.

Recommended Mantrac machines



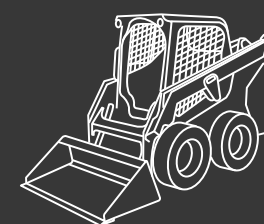
Track-Type Tractors

- Cat
- Cat GC
- SEM



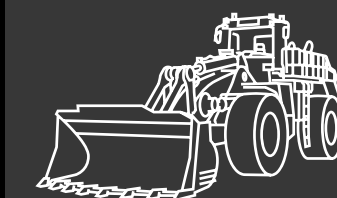
Telehandlers

- Cat



Skid Steer Loaders

- Cat



Wheel Loaders

- Cat HP
- Cat GC
- SEM

TECHNOLOGY AND SUPPORT

Boost production. Reduce costs. Improve profitability.



Product Link/VisionLink

Hardware that captures on-the-go data about equipment usage. Hardware installation is included.

[Product Link video](#)

[Vision Link video](#)



Cat Grade

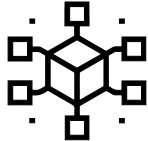
Help operators hit grading targets right on the money. This technology enables faster and fewer passes, resulting in 50% greater productivity.

[Grade Assist](#)

[Grade with 2D](#)

[Grade with Advanced 2D + 3D](#)

[Cat LIFT Assist](#)



Cat App

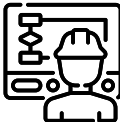
Track the location and health of your equipment, order service and parts, and activate telematics devices directly from your mobile.

[Cat App video](#)



Cat Detect

Improve job site safety by taking advantage of cameras, e-fence and advanced sensor systems.



Cat Inspect

Capture and access inspection data of all your equipment on a mobile device.

[Cat Inspect Video](#)



Cat Payload

Get crucial information on any type of payload function; what got loaded where, how much went in each truck or hopper, and where it went from there.

[View All Technology and Support Solutions](#)

[Cat Payload](#)

[Cat Payload for Wheel Loaders](#)

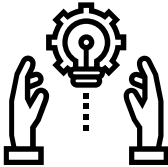
MANTRAC 360 SOLUTIONS

Mantrac provides lifecycle support with custom coverage for your goals and objectives.



Machine Uptime Guarantee

Protect your operations from machine downtime. We offer courtesy loan-bridging machines during equipment service periods, so you keep running



Customer Value Agreements (CVA)

Mantrac shares data insights by monitoring thousands of machines, to help you achieve predictable output and profit.

CVA Video



Fuel Consumption Guarantee

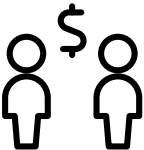
If your machine consumes more than a defined level of fuel, Mantrac will reimburse the difference.



Equipment Protection Plans (EPP)

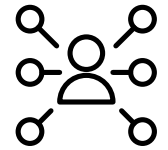
We offer specialised plans designed to cover your machine in case of unanticipated breakdowns and repairs.

EPP Coverage Plan



Financing

Customisable payment plans to help expedite your purchase and get your equipment on the job faster.



The Mantrac Network

Mantrac has a large network and parts inventory, minimal time intervals for ordering, field servicing and repairs, and our own reconstruction facility.

THE MANTRAC BENEFIT: BUILDING PROFITABLE AND EFFICIENT OPERATIONS

Our goal is to help you achieve profitability in your agriculture and forestry project, by providing you with:

- A wide range of versatile equipment with dedicated tools and attachments
- Consistent productivity when you need it
- Low total cost of ownership with long economic life

[View 3D Model](#)



Consulting

We consider your application requirements, total ownership costs and more, backed by 40 years of experience.



Wide range

Choices for short-term utility, lifecycle value or long-term performance. Built for all intensities and applications.



Customisation

Versatile attachments. Technology for visibility, on and off the job site. Tailored solutions for less downtime.



Acquisition

Reduce CAPEX with used or rental machines: like-new performance at a competitive price.



Training

Our Cat-certified experts train your team on machine operation to improve safety, fuel efficiency, productivity and profit.